



ATLAS
FIXINGS
FOR A **STRONGER** FIX



Samac Fixings Ltd

2 - 4 Capitol Industrial Centre
Fulmar Way
Wickford
Essex
SS11 8YW

Tel 01268 764488
Fax 01268 562085
Email sales@samacfixings.co.uk
www samacfixings.co.uk



ATLAS

**CHEMICAL
ANCHORS**

**PE + PESF
RESIN**

**POLYESTER CHEMICAL
ANCHOR**

FOR A STRONGER FIX

ATLAS PE + PESF RESINS are two component polyester chemical anchors, primarily developed and designed to anchor threaded rods into concrete, masonry and hollow wall substrates. Manufactured in the UK, ATLAS PE and ATLAS PESF resins are suitable for both horizontal and vertical applications. They offer an excellent permanent alternative to traditional expansion anchors, resulting in minimal stress to the substrate and can also be used for close to edge fixing.



ATLAS PE RESIN

POLYESTER CHEMICAL ANCHOR

FOR MEDIUM AND LIGHT LOADS

As a styrene based resin, it is only recommended that this product is used **OUTDOORS**.

ATLAS PESF RESIN

POLYESTER CHEMICAL ANCHOR

FOR MEDIUM LOAD AND DURABILITY

As a styrene free resin, this product can be used **INDOORS** and in confined spaces due to low odour emission.

TYPICAL TENSILE PERFORMANCE - STANDARD EMBEDMENT DEPT

Concrete, C20/25, 5.8 Grade Studding							
Size	Recommended Load			Spacing S _{cr, II}	Drill Hole Ø	Fixing Hole Ø	Setting Depth
	PE Tension (N _{rec})	PESF Tension (N _{rec})	Shear (V _{rec})				
M8	6.55	6.93	5.14	160	10	9	80
M10	8.22	8.70	8.57	200	12	12	90
M12	11.34	12.00	12.00	240	14	14	110
M16	16.30	17.25	22.29	320	18	18	125
M20	25.23	27.23	34.86	400	24	22	170
M24	32.16	34.03	50.29	450	28	26	210
M30	44.53	47.12	81.43	520	35	32	280

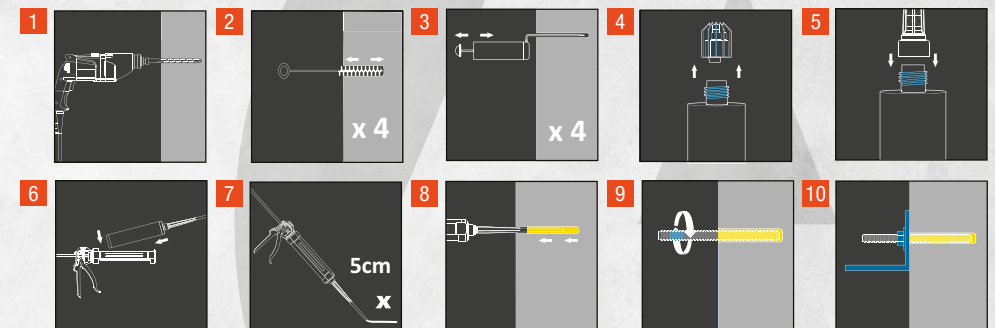
WORKING AND HARDENING TIMES

Base Material Temperature	-10°C**	-5°C**	5°C	15°C	25°C	35°C
Gel Working Time	50'	40'	20'	9'	5'	3'
Curing Time Dry Concrete	240'	180'	90'	60'	30'	20'
Curing Time Wet Concrete	x 2	x 2	x 2	x 2	x 2	x 2

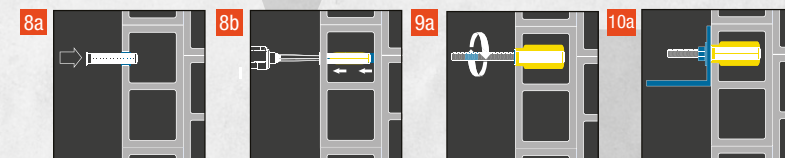
**Resin Temperature must be at least 20°C

INSTALLATION

SOLID SUBSTRATES



HOLLOW WALL



ATLAS PE RESIN

POLYESTER CHEMICAL ANCHOR

FOR MEDIUM AND LIGHT LOADS

Product Code	Description	Size	Box Qty
XACPE300	Atlas Polyester Resin	300ml	15
XACPE410	Atlas Polyester Resin	410ml	10

FEATURES AND BENEFITS

- Good bond strength with high load resistance
- Used with all grades of threaded rod
- Used in concrete and masonry
- Fast gelling and curing
- Used in dry and wet conditions
- Also suitable as a filler for gap and crack filling
- Economical fixing resin
- Extremely versatile
- Close edge distance and small spacing
- Manual cleaning up to 20mm diameter and embedment depths of 240mm
- Independently tested and approved (ITB Approval / Socotec Approval)

APPROVALS

- ITB approved AT-15-6895:2011 - ITB-973/W
- ETA 16/0907 - ETAG 029 Hollow Wall / Masonry Installations
- Tested according to LEED 2009 EQ c4.1, SCAQMD rule 1168 (2005)
- A+ Rating VOC content



ATLAS PESF RESIN

POLYESTER CHEMICAL ANCHOR

FOR MEDIUM LOAD AND DURABILITY

Product Code	Description	Size	Box Qty
XACPESF300	Atlas Polyester Styrene Free Resin	300ml	15

FEATURES AND BENEFITS

- Good bond strength with high load resistance
- Used with all grades of threaded rod
- Used in concrete and masonry
- Fast gelling and curing
- Used in dry and wet conditions
- European approval for use in concrete ETAG001 Option 7
- European approval for use in masonry with nylon sleeves
- Close edge distance and small spacing
- Also suitable as a filler for gap and crack filling
- Economical fixing resin
- Extremely versatile
- Styrene free with low odour
- Close edge distance and small spacing
- Manual cleaning up to 20mm diameter and embedment depths of 240mm
- Independently tested and approved

APPROVALS

- ETA ETAG 001 Option 7 M8-M16
- ETA ETAG 029 for Masonry Size M10
- ITB approved AT-15-6900:2011 - ITB-978/W
- Association Socotec Approval CAZ 0834/1
- Tested according to LEED 2009 EQ c4.1, SCAQMD rule 1168 (2005)
- A+ Rating VOC content



ATLAS CHEMICAL ANCHOR STUD



Product Code	Description	Size	Box Qty
XAC8110STUD	Atlas 5.8 Grade BZP Anchor Stud	M8 x 110mm	10
XAC10130STUD	Atlas 5.8 Grade BZP Anchor Stud	M10 x 130mm	10
XAC12160STUD	Atlas 5.8 Grade BZP Anchor Stud	M12 x 160mm	10
XAC16190STUD	Atlas 5.8 Grade BZP Anchor Stud	M16 x 190mm	10
XAC20260STUD	Atlas 5.8 Grade BZP Anchor Stud	M20 x 260mm	6

ATLAS RESIN MIXING NOZZLE



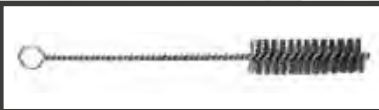
Product Code	Description	Size	Box Qty
XACRMN	Atlas Resin Mixing Nozzle	N/A	10

ATLAS 280MM CLEANING PUMP



Product Code	Description	Size	Box Qty
XAC280CP	Atlas 280mm Cleaning Pump	280mm	1

ATLAS STEEL WIRE BRUSH



Product Code	Description	Size	Box Qty
XAC13SWB	Atlas Steel Wire Brush	13mm	1
XAC18SWB	Atlas Steel Wire Brush	18mm	1

ATLAS NYLON SLEEVE



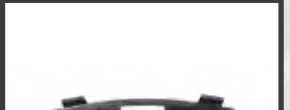
Product Code	Description	Size	Box Qty
XAC1585NS	Atlas Nylon Sleeve	M15 x 85mm	10
XAC15135NS	Atlas Nylon Sleeve	M15 x 135mm	10

ATLAS HD RESIN GUN



Product Code	Description	Size	Box Qty
XAC300HDET	Atlas HD Resin Gun	300ml	1
XAC410HDET	Atlas HD Co-Axial Resin Gun	410ml	1

ATLAS CHEMICAL ANCHOR SITE CASE WITH RESIN



Product Code	Description	Qty
XACSCWR	Atlas Chemical Anchor Site Case W/Resin	
	Case contents:	
	Atlas Polyester Resin 300ml	2
	Atlas Polyester Styrene Free Resin	2
	Atlas HD Resin Gun	1
	Atlas 190mm Cleaning Pump	1
	Atlas Steel Wire Brush	4
	Atlas Resin Mixing Nozzle	6
	Nylon Sleeves	5



ATLAS CHEMICAL ANCHOR SITE CASE WITHOUT RESIN



Product Code	Description	Qty
XACSC	Atlas Chemical Anchor Site Case	
	Case contents:	
	Atlas HD Resin Gun	1
	Atlas 190mm Cleaning Pump	1
	Atlas Steel Wire Brush	4
	Atlas Resin Mixing Nozzle	6
	Nylon Sleeves	5
	Atlas Resin Mixing Nozzle	6
	Nylon Sleeves	5



ATLAS BOLTS



Replacement for traditional expansion anchors. Ideal for fixing battening, fence post supports, racking, handrails etc.

INSTALLATION



Drill hole



Clean hole



Install bolt

ATLAS SCREWS



Replacement for traditional plug fixings. For fixing UPVC and timber frames and other light duty fixtures to masonry.

INSTALLATION



Drill hole



Clean hole



Install screw